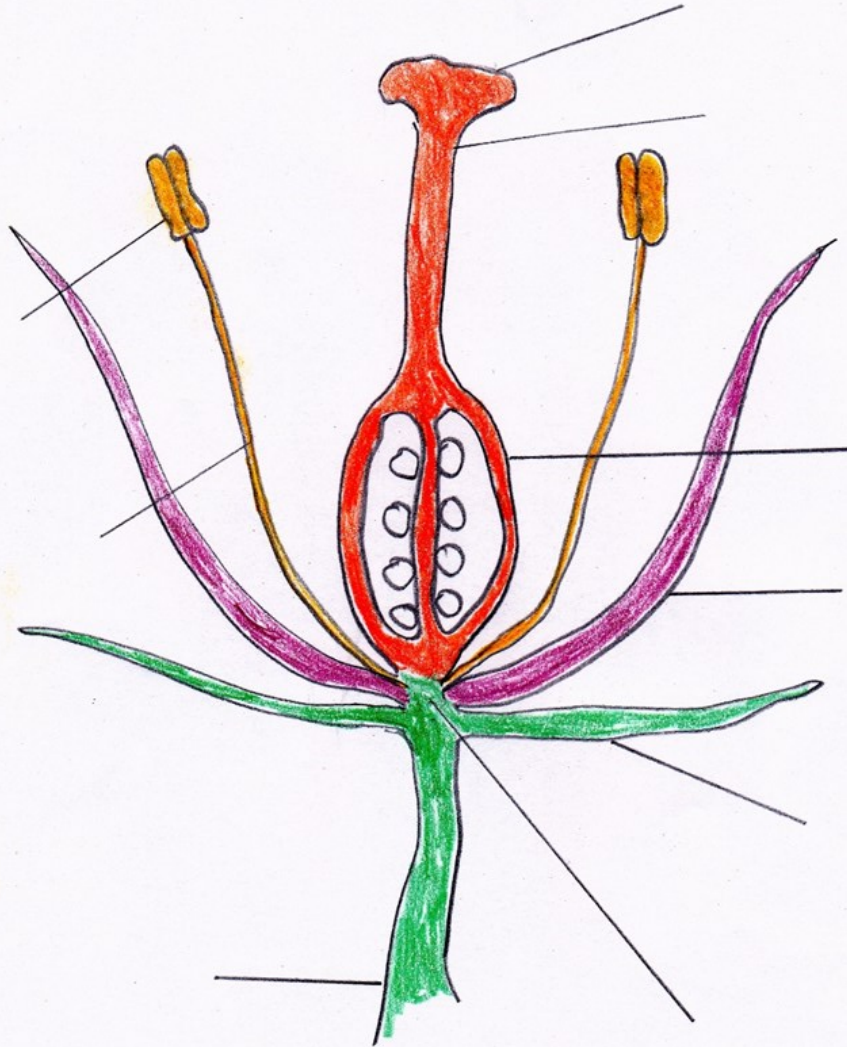


Flower Structure



STRUCTURE	FUNCTION
<p>SEPAL</p> <p>Collectively CALYX</p>	<p>Protects the unopened flower bud</p>
<p>PETAL</p> <p>Collectively COROLLA</p>	<p>May be brightly coloured to attract insects</p>
<p>STAMEN</p> <p>1. Anther</p> <p>2. Filament</p>	<p>Male reproductive organ consisting of:</p> <ul style="list-style-type: none"> - produces male sex cells in pollen grains - holds up the anther
<p>CARPEL</p> <p>1. Stigma</p> <p>2. Style</p> <p>3. Ovary</p>	<p>Female reproductive organ consisting of:</p> <ul style="list-style-type: none"> Swollen area on top of style which acts as a receptive surface for the pollen - Tube which connects stigma to style - Contains the female sex cells in the ovules. After fertilisation the ovules develop into seeds.

flower Structure

